

NCLM Disaster Recovery Grant Training

ambipar[®]

WITT ÓBRIEN'S



Appalachian
Regional
Commission

Getting Started

Your Presenter



Emily Winburn, PhD, GPC
Grant Management
Specialist, Witt O'Brien's

- Emily is a Charlotte, NC native with family roots in Transylvania County. She has been working with NCLM since November 2023 and enjoys working with communities in NC to help them achieve goals through grants
- Her career has been in government and non-profit grants work, including writing, management, implementation, research, and support.
- She has been the lead writer on many successful grants, totaling millions of dollars for communities, including federal, state, and private foundation level grant opportunities.
- She earned a BS in Spanish and International Health and PhD in International Family and Community Studies from Clemson University.

Getting Started

Training Content

- Background
- Grant Overviews
- Applicant Requirements for all ARC Grants
- Program Status and Timeline
- Additional Information
- Questions and Discussion

Expected Learning Outcomes

- 1) Understand the purpose of the Appalachian Regional Commission (ARC) Grant programs
- 2) Learn eligible activities under the programs
- 3) Address timeline for next steps



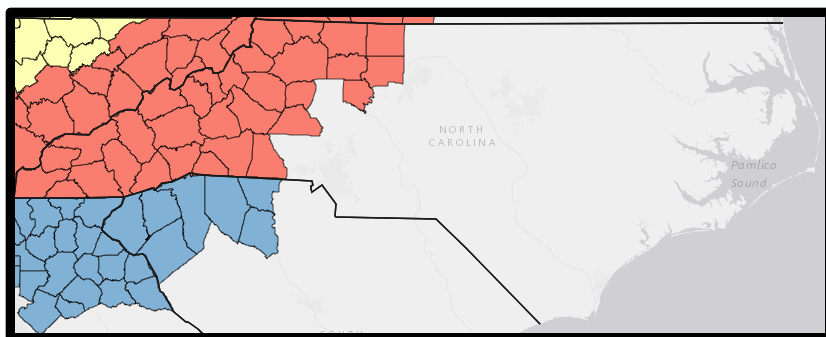
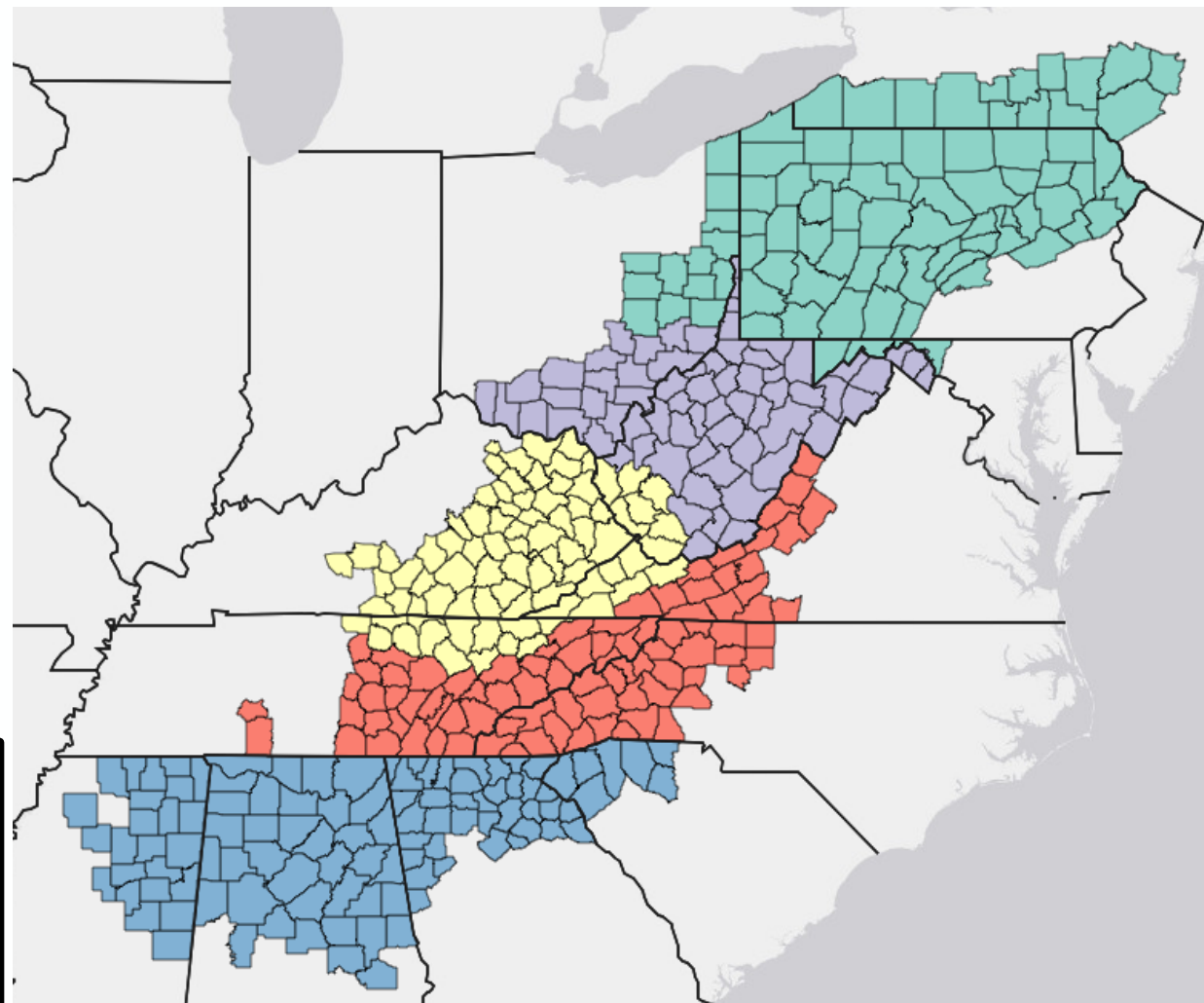
Background

ambipar^a
WITT O'BRIEN'S

Background

ARC Appalachian Region Descriptors

- 423 counties across 13 states, spanning 206,000 square miles from Southern NY to Northern MS
- 26.4 million residents
- Parts of the following states: Alabama, Georgia, Kentucky, Maryland, Mississippi, New York, North Carolina, Ohio, Pennsylvania, South Carolina, Tennessee, Virginia, West Virginia



Background

Appalachian Regional Commission (ARC) Background

- ARC uses Congressionally appropriated funds to invest in Appalachia's economic and community development through grants
- Unique federal-state partnership
- Every grant opportunity follows their strategic investment priorities:
 - Building Businesses
 - Workforce Systems
 - Community Infrastructure
 - Regional Culture and Tourism
 - Leaders and Local Capacity

Background

Appalachian Regional Commission (ARC) Background

- Funding Opportunities:
 - ARISE – Appalachian Regional Initiative for Stronger Economies
 - INSPIRE – Investments Supporting Partnerships in Recovery Ecosystems Initiative
 - POWER – Partnerships for Opportunity and Workforce and Economic Revitalization Initiative
 - READY Appalachia Grants to Grow
 - WORC – Workforce Opportunity for Rural Communities

Note: There are no open opportunities currently, but this gives you time to prepare materials to be ready when they open

Grant Overviews



ambipar®

WITT O'BRIEN'S

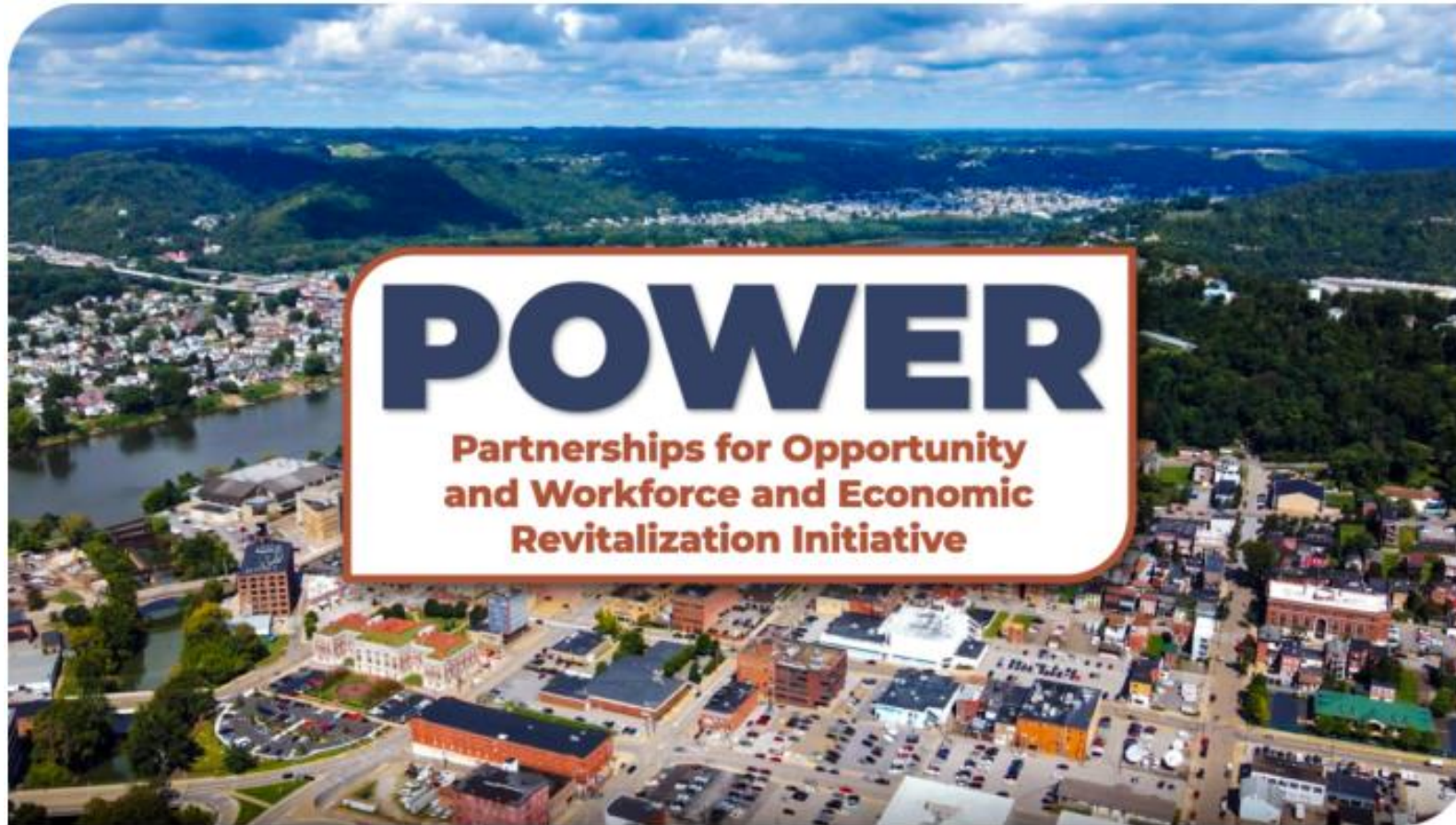
ARISE – Appalachian Regional Initiative for Stronger Economies

Goal: Multi-state initiative that aims to drive large-scale, regional economic transformation through collaborative projects

History: Since January 2023, ARC has invested \$176.8M (leveraging \$274.6M in provide investment) in 64 projects impacting all 13 Appalachian states; creating/retaining 22,300 jobs

Examples of Funded Projects:

- Regional effort to [expand broadband access](#)
- Construction of [manufacturing facility bringing jobs and regional supply chain](#) to Appalachia



Grant Overviews

POWER – Partnerships for Opportunity and Workforce and Economic Revitalization Initiative

Goal: Target federal resources to expand economic opportunities for coal communities; strengthen a variety of industries including manufacturing, entrepreneurship, healthcare, and workforce development

History: \$485M supporting 564 projects in 365 counties

Examples of Funded Projects:

- Along with WORC funds, [school districts in KY expanded IT training](#) for students with employer partners
- [Eastern Band of Cherokee Indians increased meat production on tribal lands](#) while incorporating traditional leather tanning

ambipar®

WITT O'BRIEN'S



READY Appalachia Grants to Grow – *READY Local Governments*

Project types: Applicants must propose projects that strengthen economically distressed (Tier 1 or Tier 2) communities in Appalachia and/or demonstrate low capacity themselves

Projects must help build:

- Individual capacity (staff training and professional development)
- Organizational capacity (internal strategic planning or expanding services)
- Community capacity (launching community-led planning process or hiring a planning contractor)
 - Disaster preparedness plan development

\$9M total funding pool that awards grants of up to \$500,000

- Usually requires a Letter of Interest (LOI) process

ambipar® - Opens periodically



WORC – Workforce Opportunity for Rural Communities

Goal: WORC is managed by the US Dept. of Labor (Appalachia, Delta, Northern Border regions); provides enhanced training and support activities to dislocated workers, new entrants to the workforce, incumbent workers and individuals facing barriers to employment due to economic distress or structural shifts in local industries

History: \$102.1M supporting 77 projects in 326 counties

Example Activities:

- Recruit eligible participants
- Design and deliver essential workforce training
- Provide critical supportive services to enable participants to complete programs and enter or retain family-sustaining employment
- Establish or expand partnerships to ensure project designs align with community priorities and continue to provide benefits to the community long-term



Applicant Requirements for all ARC Grants

Eligible Applicants

- Counties
- Cities
- Towns
- Local Development Districts
- School Districts
- Public Authorities
- Indian Tribes
- Institutions of Higher Education
- Nonprofit Organizations

Note: READY Appalachia grants are open to a smaller pool of eligible applicants (local government only)

Application Requirements

1. [SAM.gov Unique Entity Identifier](#)

All ARC grant applicants must have an active registration in SAM.gov and a valid UEI

2. [Applicant Resources](#)

Each grant will have application checklists, forms, and other necessary documents available for successful applications

Applicant Requirements for all ARC Grants

Match Requirements

- Most ARC grants require match funding (most ARC grants are federal funding)
 - Match commitment documentation required
 - Cash, In-Kind (non-cash in the form of real property, equipment, supplies, services, training, or other expendable property)
- Match rates are based on the economic status designations of counties served by the proposed project
- [Interactive Map of County Economic Status and Distressed Areas FY26](#)

DISTRESSED COUNTIES	AT-RISK COUNTIES	TRANSITIONAL COUNTIES	COMPETITIVE COUNTIES
Match Requirement: 20%	Match Requirement: 30%	Match Requirement: 50%	Match Requirement: 70%
Maximum ARC Share: 80%	Maximum ARC Share: 70%	Maximum ARC Share: 50%	Maximum ARC Share: 30%



Program Status and Timeline

What Happens Next?

- None of the ARC grant opportunities are open right now
- More details will be available about each grant once the Notice of Funding Opportunity (NOFO) is released
- Use program website to track updates

Action Steps

- Verify that you have a UEI or Register for a UEI at [Sam.gov](https://sam.gov)
- [Sign up for ARC email updates](#)
- Use [ARC's interactive map](#) to determine your county's distress level and start prepping for the required match
- Use [ARC's Capacity Building Projects Guide](#) to start thinking about what you want to apply for when the READY Grants to Grow are open again

Need More Information?

If you are interested in any ARC grants, reach out to Regina or Desmond to set up a time to talk with the WOB team

Regina Mathis
rmathis@nclm.org

Desmond Worrell
dworrell@nclm.org

Additional Information

Additional Information

Important Links

- [ARISE: Appalachian Regional Initiative for Stronger Economies - Appalachian Regional Commission](#)
- [POWER: Partnerships for Opportunity and Workforce and Economic Revitalization Initiative - Appalachian Regional Commission](#)
- [READY Grants to Grow - Appalachian Regional Commission](#)
- [WORC: Workforce Opportunity for Rural Communities - Appalachian Regional Commission](#)
- [Home | SAM.gov](#)
- [Applicant Resources - Appalachian Regional Commission](#)

Award Summaries for Each Grant Program:

[Select ARISE Projects - Appalachian Regional Commission](#)

[POWER Award Summaries by State as of October 2024.](#)

[Workforce Opportunity for Rural Communities \(WORC\) Initiative | U.S. Department of Labor](#)

ambipar®

WITT O'BRIEN'S

NC ARC Contacts

State Partners

Governor:

[Honorable Josh Stein](#)

Governor's ARC Representative:

[Jim McCleskey](#), Director

email: **jim.mccleskey@nc.gov**

North Carolina Washington Office
444 North Capitol Street, NW
Suite 332
Washington, DC 20001

ARC State Program Manager:

[Olivia Collier](#), Director of Regional Development
Commissions (ARC & SCRC)

email: **ocollier@commerce.nc.gov**

301 North Wilmington Street
4346 Mail Service Center
Raleigh, NC 27699-4346
919.218.3623

Questions and Discussion

ambipar[®]

WITT ÓBRIEN'S